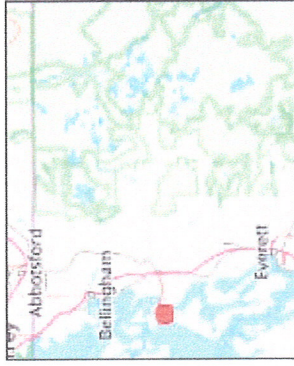
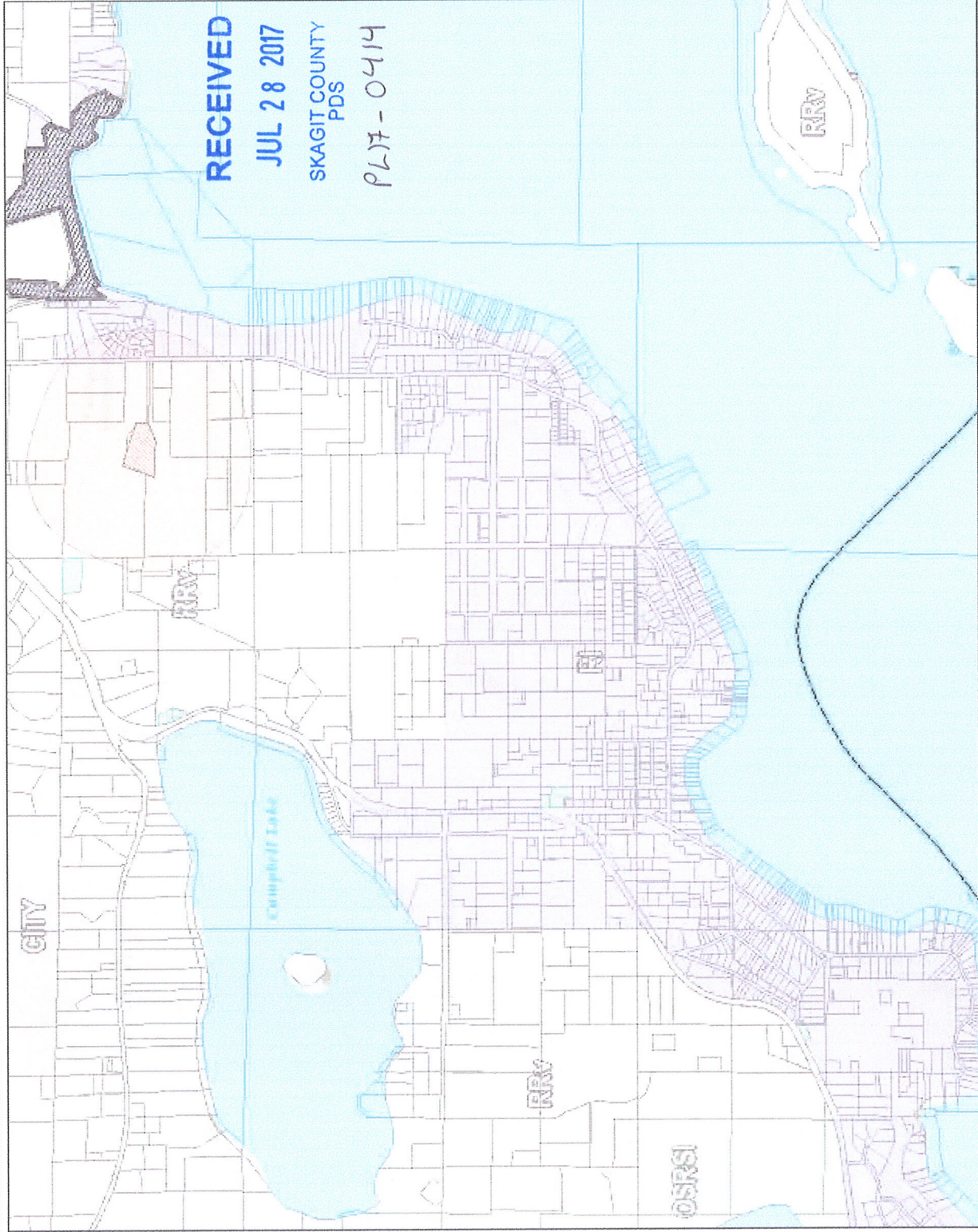


Quaker Cove Land Use Map Amendment



Legend

	Tax Parcels
	Airport Environs Overlay
	UGA Areas
	Simik Beach LAMIRD
	MRO
	MRO Quarter Mile Buffer
	Comprehensive Plan

	A-UD; LC-UD; MV-UD
	AVR
	AVR-L
	Ag-NRL
	BR-CC
	BR-HI
	BR-LI
	BR-R
	BR-URV
	C
	CITY
	CSB; MPR; NRI; RB; RC; RFS; RV
	H-I
	H-R
	H-URV
	IF-NRL
	OSRSI
	R
	RI

Notes

This map is a user generated static output from an internet mapping site and is for reference only. Data layers that appear on this map may or may not be accurate, current, or otherwise reliable. NOT TO BE USED FOR NAVIGATION.
 7/18/2017

0.78 Miles

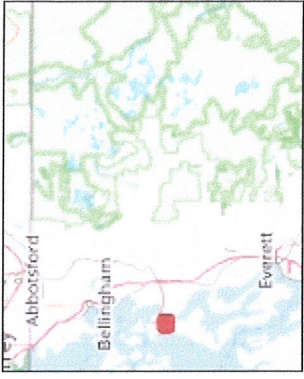
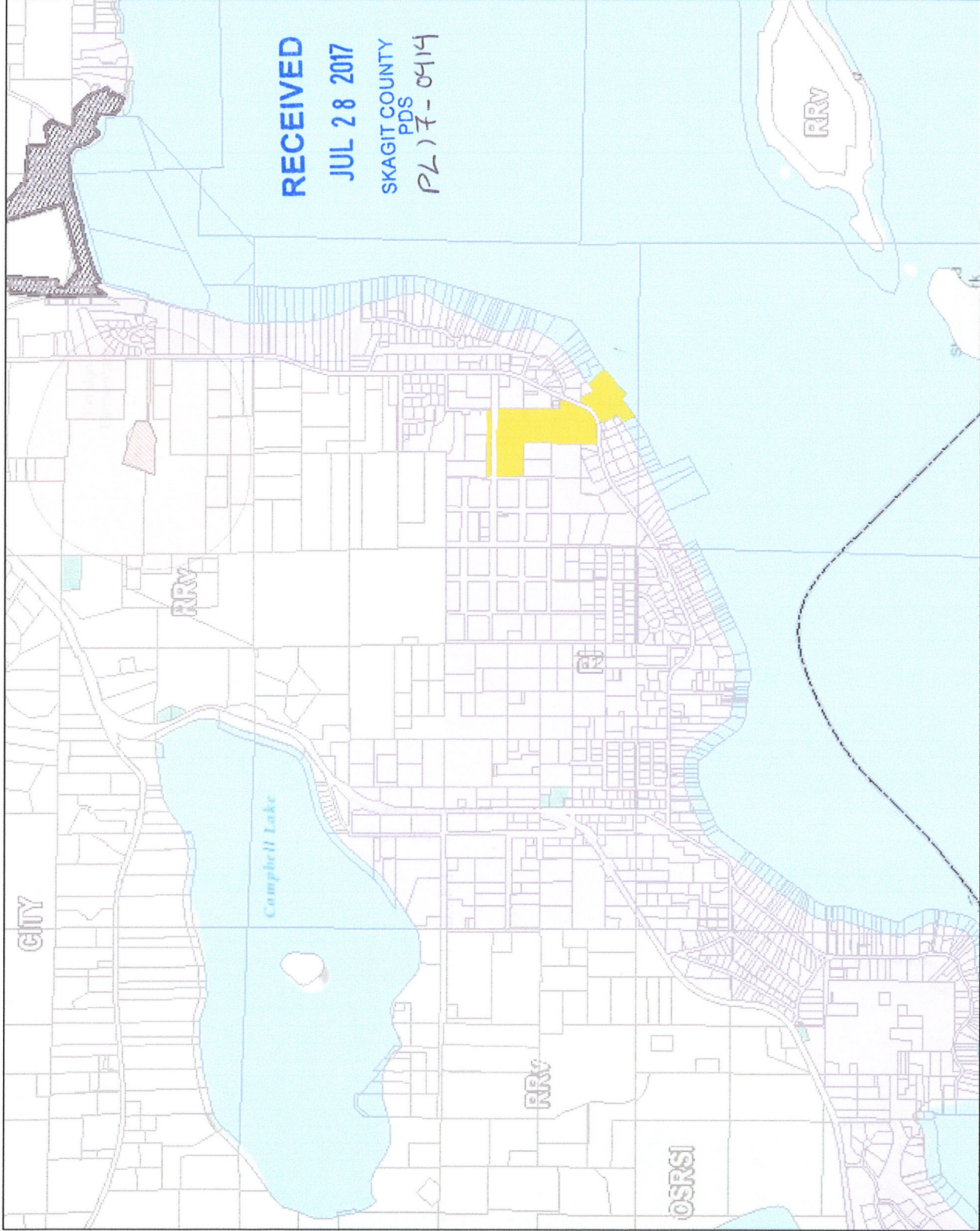
0.39 Miles

0

Scale 1: 24,663

© Skagit County

Quaker Cove Land Use Map Amendment



Legend

	Tax Parcels
	Airport Environs Overlay
	UGA Areas
	Similk Beach LAMIRD
	MRO
	MRO Quarter Mile Buffer
	Comprehensive Plan
	A-JD; LC-JD; MV-JD
	AVR
	AVR-L
	Ag-NRL
	BR-CC
	BR-HI
	BR-LI
	BR-R
	BR-URV
	C
	CITY
	CSB; MPR; NRI; RB; RC; RFS; RV
	H-I
	H-R
	H-URV
	IF-NRL
	OSRSI
	R
	RI

Notes

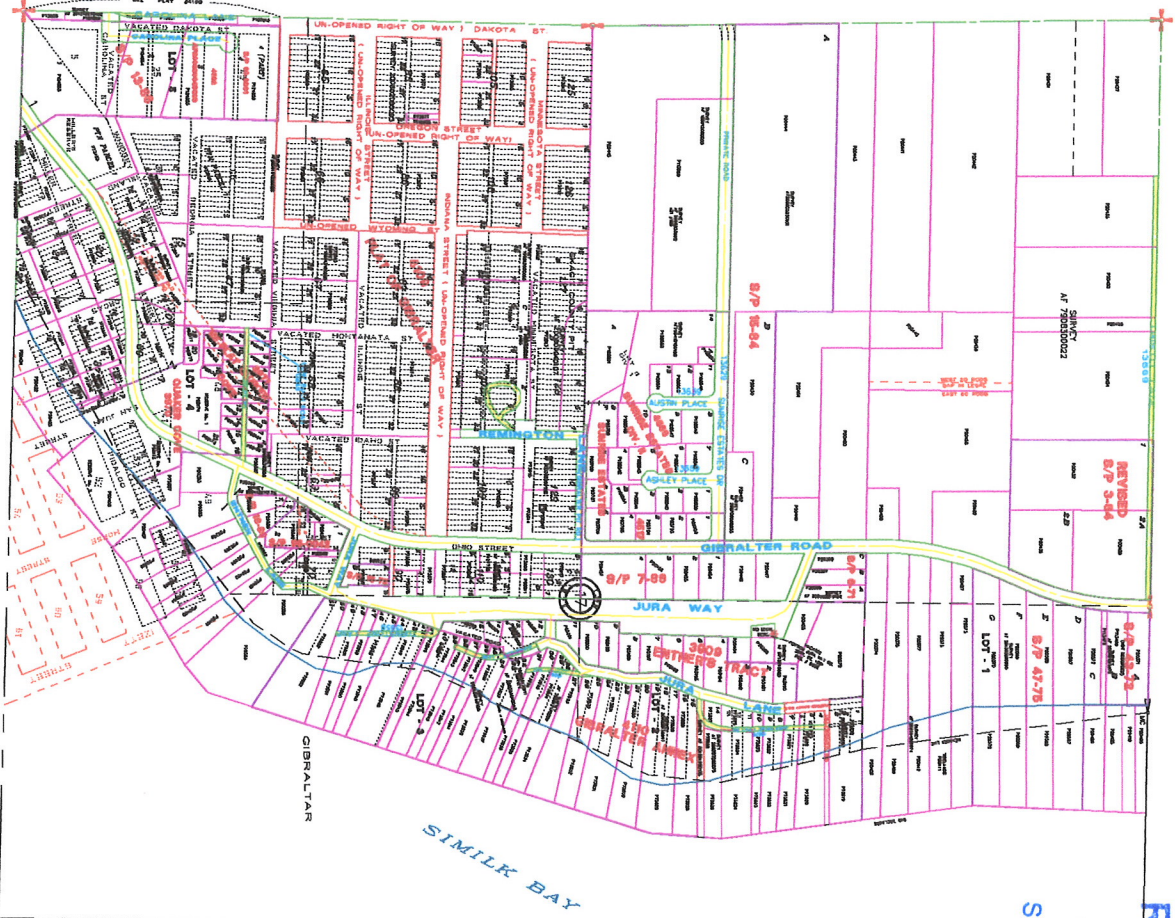
0.78 0 0.39 0.78 Miles

Scale 1: 24,663

© Skagit County

This map is a user generated static output from an Internet mapping site and is for reference only. Data layers that appear on this map may or may not be accurate, current, or otherwise reliable. NOT TO BE USED FOR NAVIGATION.

7/18/2017



RECEIVED

JUL 28 2017

SKAGIT COUNTY
PDS

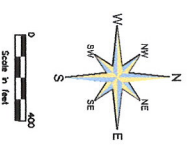
PL 17-0914

6	5	4	3	2	1
7	8	9	10	11	12
13	14	15	16	17	18
19	20	21	22	23	24
25	26	27	28	29	30
31	32	33	34	35	36

T 34 N R 02 E

SKAGIT COUNTY

*** ATTENTION ***
 THIS COUNTY RECORDS SECTION HAS BEEN PLACED WITH THE SKAGIT COUNTY RECORDS DIVISION. IF YOU HAVE ANY QUESTIONS, PLEASE CONTACT THE RECORDS DIVISION AT (503) 338-3300.



This map was prepared from original records, and the accuracy of the information shown hereon is not guaranteed. The user of this map should verify the accuracy of the information shown hereon by field inspection. This map is not a substitute for field survey.

DATE	INIT.
DRAWN BY	ZM/MS LJS
REVISED	7/27/17 SP
PLOTTED	7/27/17 SP
MAP PRODUCED BY	SKAGIT COUNTY MAPS AND RECORDS DIVISION

Section 17
 T 34 N R 02 E